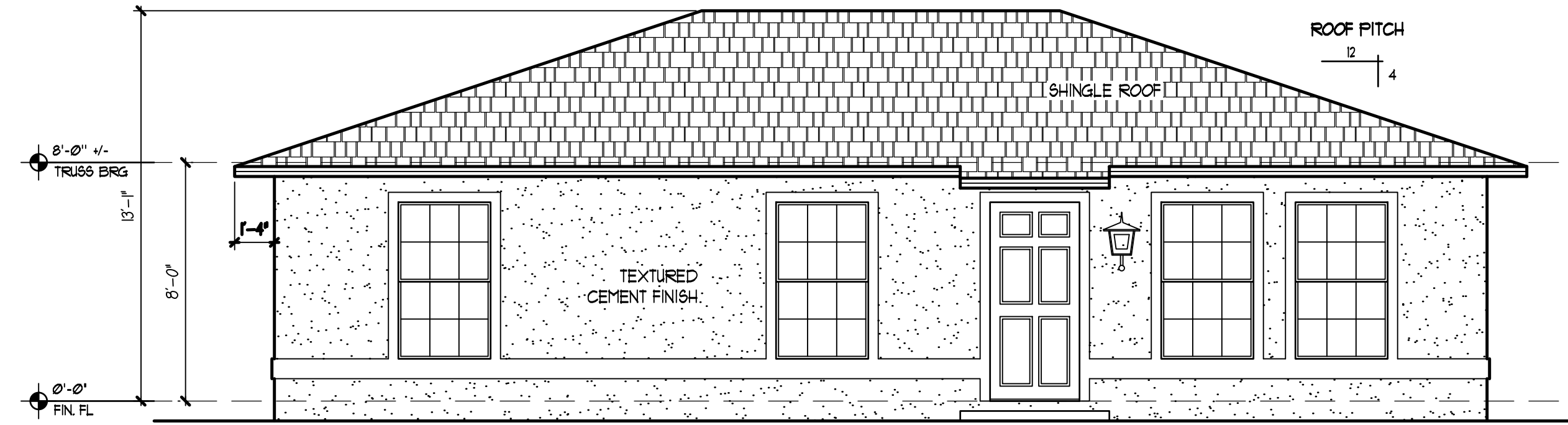


**RIGHT SIDE ELEVATION**  
SCALE = 1/4"=1'-0"



**FRONT ELEVATION**  
SCALE = 1/4"=1'-0"

# VETERAN PLAN

**NOTE:**  
CONTRACTORS AND/OR OWNER  
TO FIELD VERIFY ALL  
DIMENSIONS AND DETAILS.

**MEMO: BLOCK MASON**  
ALL WINDOW AND DOOR  
DIMENSIONS SHOWN ON PLAN  
ARE NOMINAL. BLOCK MASON  
TO REFER TO WINDOW OR DOOR  
SIZES SPECIFICATIONS FOR  
EXACT ROUGH OPENING  
REQUIREMENTS

**MEMO:**  
TERMITE PROTECTION TO BE  
COMPLIANT W/ FBC 816  
SOIL PROTECTION TO EXTEND  
12" BEYOND EXTERIOR WALLS  
OF STRUCTURE

**MEMO:**  
CONDENSATION LINES AND  
DOWNSPOUTS TO BE 12" MIN  
FROM SIDES OF STRUCTURE

**MEMO:**  
GLAZED WINDOW & DOOR OPENINGS TO BE  
PROTECTED BY APPROVED IMPACT RESISTANT  
GLAZING

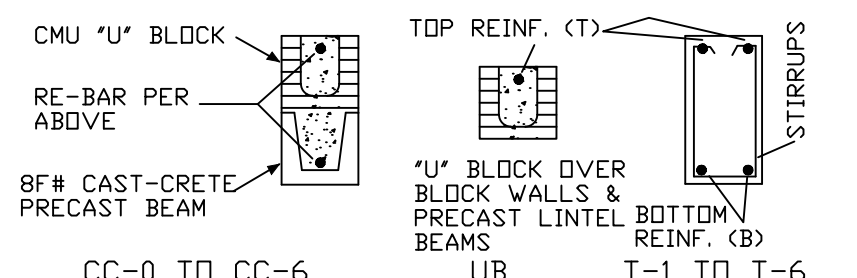
**MEMO:**  
HIP ROOF  
4/12 PITCH  
16" OVERHANG

BEAM SCHEDULE				
MARK	CAST CRETE BM.	TOP REINF.	BOTTOM REINF.	OPTIONAL BEAM
CC-0	8F8	1#5	NONE	T-1 F&P
CC-1	8F8	1#5	1#5	T-1 F&P
CC-2	8F16	1#5	NONE	T-4 F&P
CC-3	8F16	1#5	1#5	T-4 F&P
CC-4	8F24	1#5	1#5	T-8A F&P

ALL CC-X BEAMS TO BE EQUAL TO "CAST-CRETE" BEAMS (OPTIONAL F&P BEAMS MAY BE SUBSTITUTED IN THEIR PLACE) PLEASE SEE NOTE BELOW ABOUT PRE-STRESSED BEAMS

FORM AND POUR BEAMS					
MARK	WIDTH	DEPTH	BOTTOM	TOP	STIRRUPS
T-1	8"	8"	1#5	1#5	NONE
T-2	8"	8"	2#5	2#5	#3 @ 8" O.C.
T-3	8"	12"	2#5	2#5	NONE
T-3A	8"	12"	3#5	2#5	NONE
T-4	8"	16"	2#5	2#5	NONE
T-5	8"	16"	3#5	2#5	NONE
T-5A	8"	16"	3#5	2#5	#3 @ 8" O.C.
T-6	8"	16"	4#5 2 LAYERS	2#5	#3 @ 8" O.C.
T-7	8"	20"	2#5	2#5	NONE
T-7A	8"	20"	3#5	2#5	#3 @ 8" O.C.
T-8	8"	24"	2#5	2#5	NONE
T-8A	8"	24"	4#5 2 LAYERS	3#5	#3 @ 8" O.C.

NOTE: ALL STIRRUPS START AT 4" FROM END OF BEAMS  
NOTE: WHEN 2 LAYERS ARE DESIGNATED THE TOTAL AMOUNT OF BARS LISTED IS FOR THE 2 LAYERS



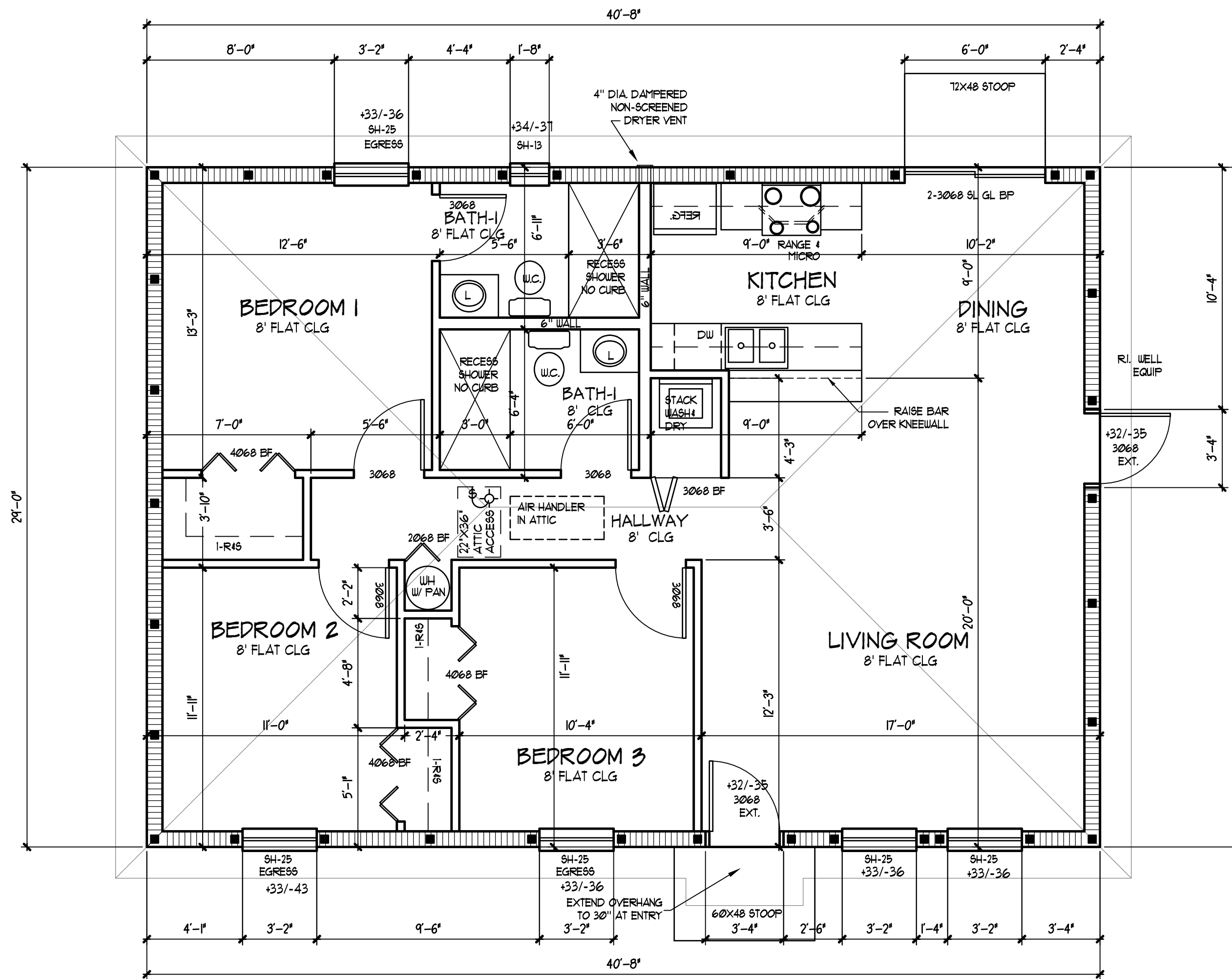
UNLESS OTHERWISE NOTED, TYPICAL BEAM FOR OPENINGS SHALL BE A CC-2; & OVER BLOCK WALLS SHALL BE UB  
NOTE: IF FORM & POUR BEAMS ARE USED THEN THE TYPICAL BEAM FOR OPENINGS SHALL BE T-4 BEAM  
NOTE: DESIGNATED PRECAST CC-3 BEAMS & T-4 FORM & POUR BEAMS ARE INTERCHANGEABLE UNLESS OTHERWISE NOTED  
NOTE: DESIGNATED PRE-STRESSED PRECAST BEAMS MAY NOT BE SUBSTITUTED UNLESS NOTED ON THE FLOOR PLAN  
NOTE: ALL BEAMS MAY BE INCREASE IN DEPTH UP TO 48" PER CONTRACTOR'S DISCRETION AS LONG AS THE PRESCRIBED REINFORCING STEEL IS IN PLACE

CONNECTOR SCHEDULE FOR MASONRY - 2015/2016		
MARK	UPLIFT IN LBS.	CONNECTOR TO TIE BEAM
1C	0 - 1810	S - (1) HETA16
2C	1811 - 2500	S - (2) HETA16
3C	2501 - 3965	S - (3) HGT or S - (2) HETA16 + S - (1) H10S
4C	3966 - 9230	S - (4) HGT-2, or, HGT-3, or, HGT-4

1 - SEE FLOOR PLAN FOR EXCEPTIONS  
2 - S = SIMPSON; ALL CONNECTORS ARE TO BE INSTALLED PER MANUFACTURER'S SPECIFICATIONS FOR NAILS AND/OR BOLTS UNLESS OTHERWISE NOTED  
3 - SEE SEALED INDIVIDUAL TRUSS SHEETS TO DETERMINE ACTUAL UPLIFT LOADS AND APPROPRIATE CONNECTORS (ONES SPECIFIED IN ORIGINAL DESIGN MAY NOT BE ADEQUATE DUE TO AN INCREASE IN ACTUAL UPLIFT VALUES)  
4 - TRUSS CONNECTORS SUCH AS THE META'S OR HETA'S MAY BE INCREASED IN LENGTH AS LONG AS THE MANUFACTURER'S SPECIFICATIONS FOR NAILS AND/OR BOLTS ARE USED FOR THE INSTALLATION.

NOTE: MASONRY CONNECTORS FOR TRUSSES ARE "1C" U.N.O.

WALL SECTIONS 4' OR GREATER IN LENGTH WITH VERTICAL RE-BAR IN A FILLED CELL AT EACH END SHALL BE CONSIDERED A SHEAR WALL



**FLOOR PLAN**  
SCALE = 1/4"=1'-0"

BASIC WIND SPEED, Vult	: 160 MPH
BASIC WIND SPEED, Vasd	: 124 MPH
RISK CATEGORY	: II
WIND EXPOSURE	: C
INTERNAL PRESSURE COEFFICIENT	: 0.18
COMPONENT AND CLADDING WIND PRESSURE (P&F), Vasd	: +34.0 TO -79.0

SQ. FTG. CALCULATIONS	
LIVING AREA	1172
TOTAL SQ. FTG	1172

**J. SCOTT DRAFTING, INC.**  
3670 S. ACCESS RD., UNIT 114  
3670 S. WOOD - PLACE, UNIT 114  
OFFICE (941) 479-3100  
FAX (941) 479-3100  
E-MAIL: JSCOTT@SCOTTDRAFTING.COM

**BUILT BY:**  
**HOMES MADE POSSIBLE, LLC**  
CG# C01042560

**A RESIDENCE FOR:**

**DATE DRAWN**  
MAY 31, 2016

**DRAWN BY**  
J. SCOTT

**DATE REVISED**

**SHEET**  
1 OF 3

**JOB NUMBER**  
16-069

TO THE BEST OF MY KNOWLEDGE, THESE PLANS ARE IN COMPLIANCE IN REGARDS TO SECTION R301 OF THE FLORIDA BUILDING CODE 5th EDITION (2014) RESIDENTIAL

TIMOTHY A. DRUMM, P.E. #73175 DATE:

**DRUMM ENGINEERING CORP.**  
E.B. #5365  
CIVIL/STRUCTURAL/GEOTECHNICAL  
17435 ABBOTT AVENUE  
PDRT CHARLOTTE, FL 33954  
PH. 941-625-9178  
FAX. 941-764-9398